

# A Guide to Medicare Enrollment

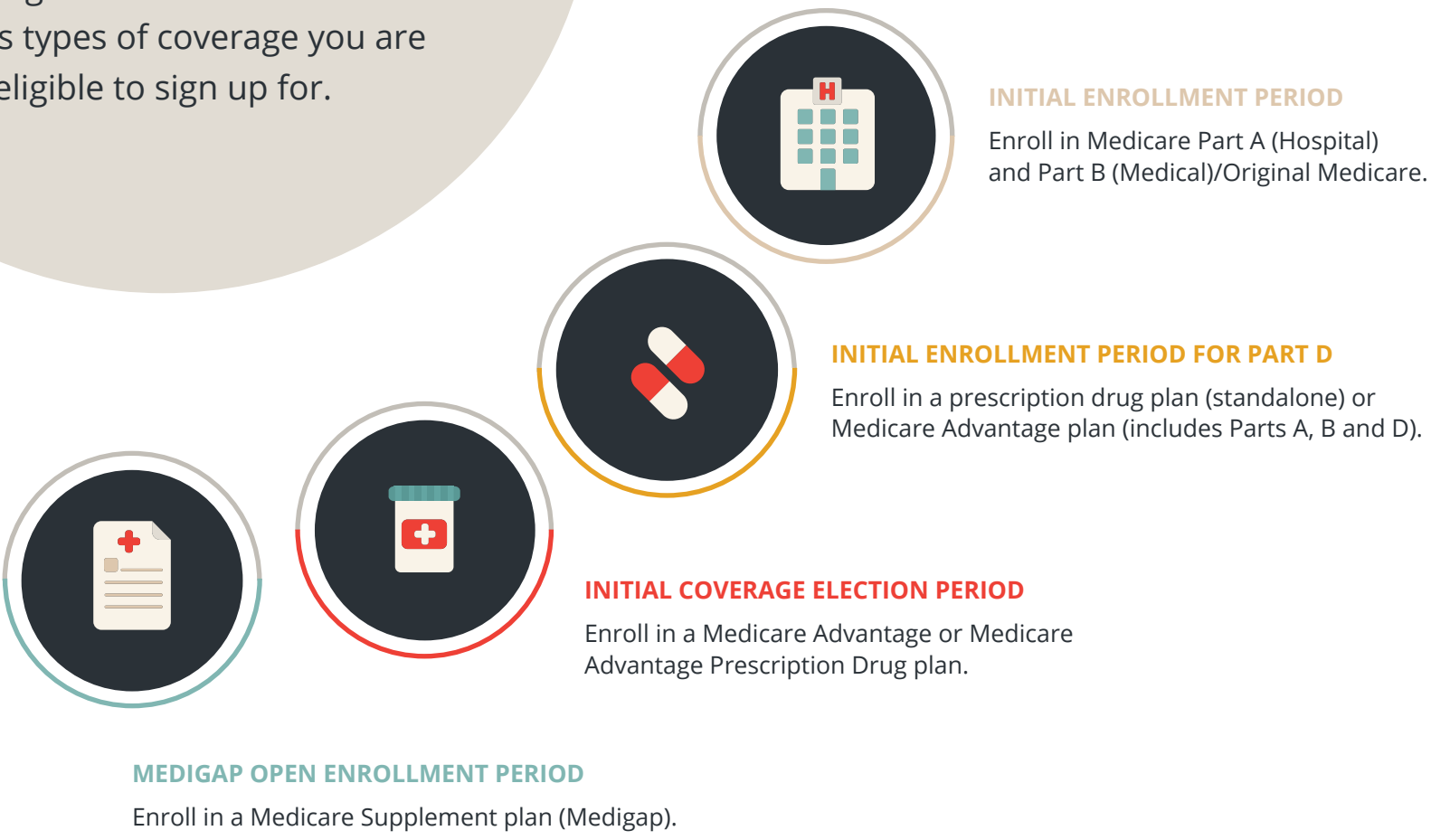
## How to Tell If You're Medicare-Eligible

If you're new to Medicare, it's difficult to figure out when you can enroll and what you need to do.

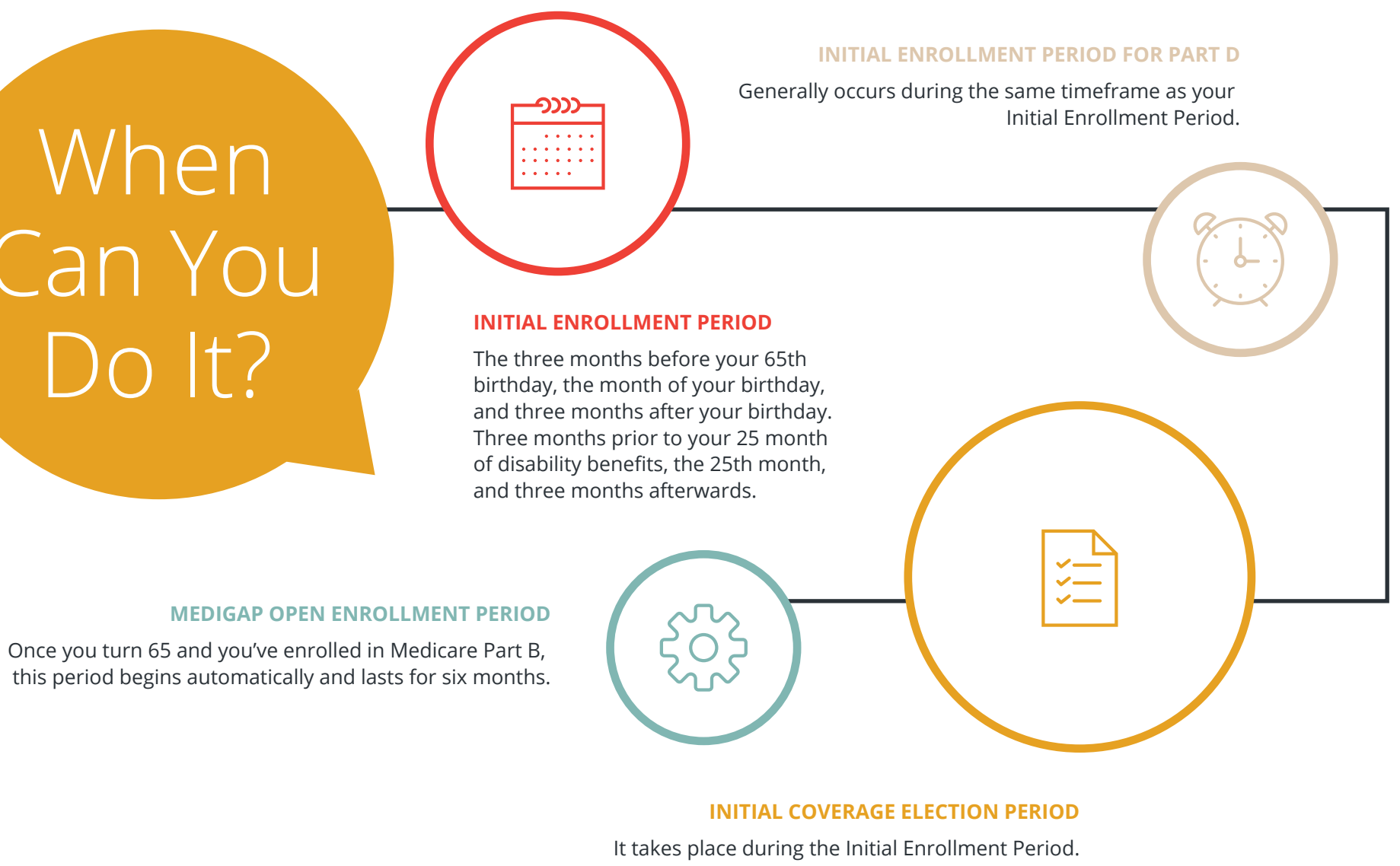
## You're First Time Enrolling in Medicare

Is this your first time enrolling in Medicare? There are various types of coverage you are eligible to sign up for.

## What Can You Do?



## When Can You Do It?



## Annual Medicare Enrollment Period

If you didn't sign up for Medicare when you were age-eligible or you are ready to change your Medicare coverage, this enrollment period is for you. In fact, it's generally the only time you can update or cancel your coverage.

## You're Already Enrolled in Medicare

**General Enrollment Period:**  
Jan. 1 to Mar. 31 2017  
Enroll in Original Medicare (Part A and Part B)

## What Can You Do?

If you're already enrolled in Medicare Medicare Advantage Disenrollment Period: Jan. 1 to Feb. 14, 2017

- Disenroll from your Medicare Advantage Plan and enroll in Original Medicare.
- Enroll in a Medicare Prescription Drug Plan.

